

XTOOL | F1 Ultra

Quick Start Guide



List of items	01
Meet your xTool F1 Ultra	02
Get the machine ready	05
Install accessories	07
Use your xTool F1 Ultra	08
Maintenance	11

* The English version is the original instructions verified by the manufacturer.

List of items



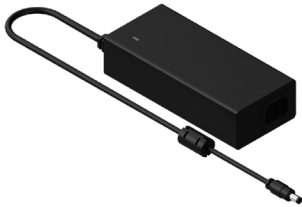
xTool F1 Ultra



Touchscreen controller



Pipe



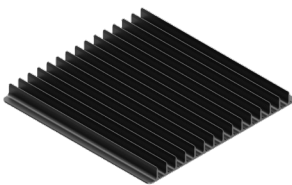
Power adapter



Power cable



USB cable



Slatted panel



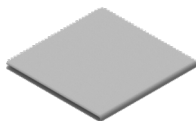
Screwdriver



L-shaped positioning piece



Key



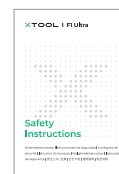
Lint-free cloth



Example project material



Quick Start Guide



Safety Instructions

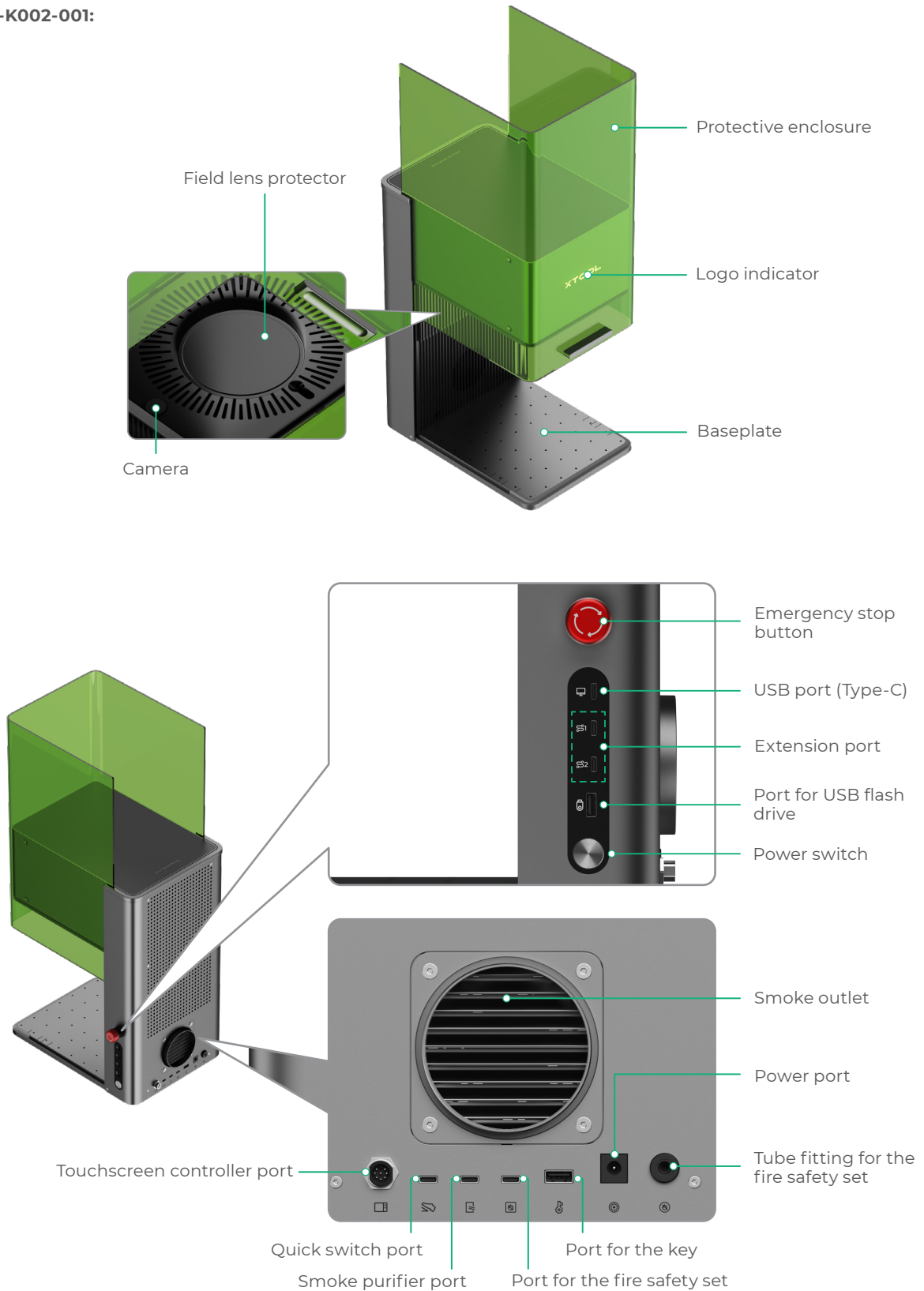


xTool F1 Ultra comes in two models: MXF-K002-001 and MXF-K002-B20. The structure and appearance of the main unit and the touchscreen controller differ slightly between the two models.

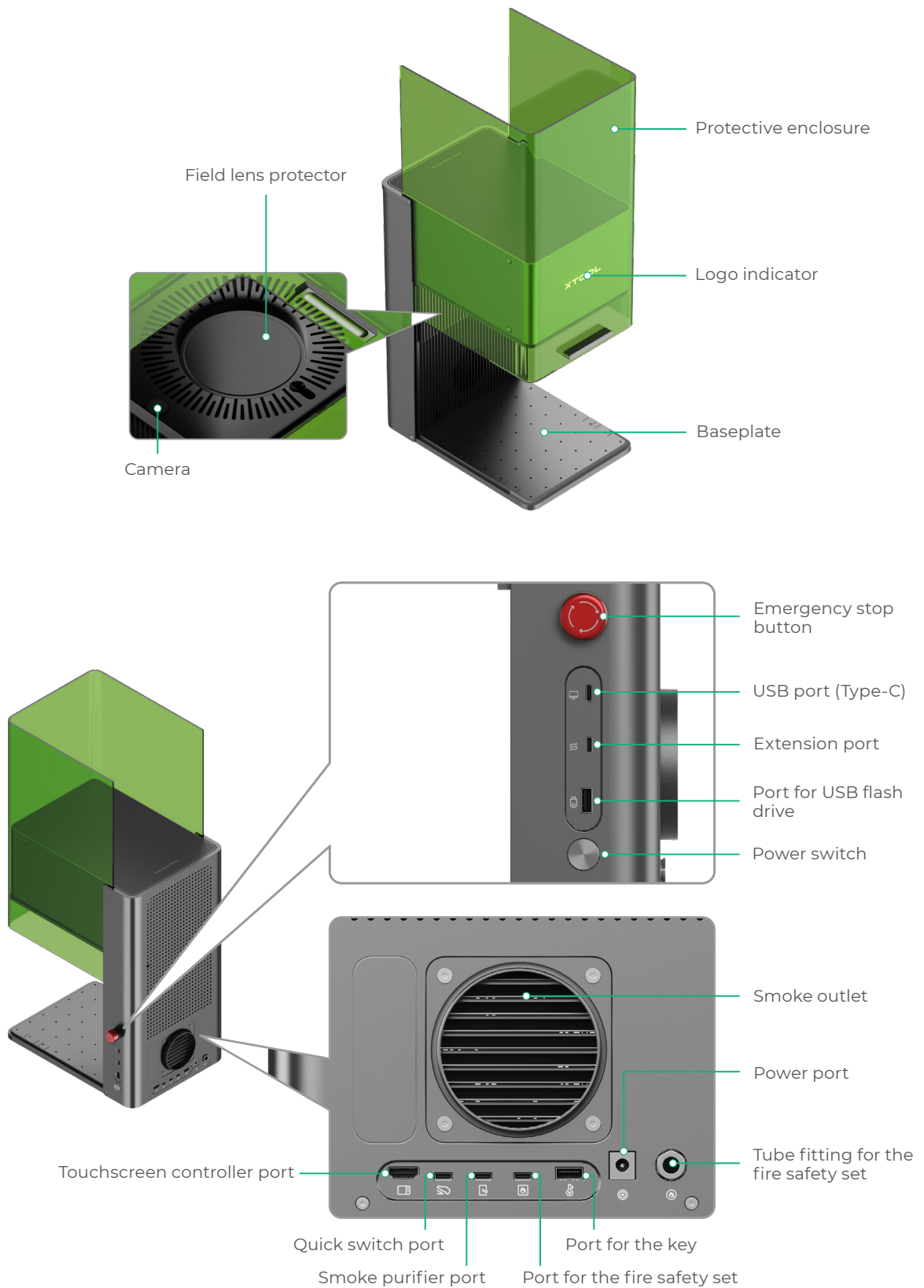
Meet your xTool F1 Ultra

Product structure

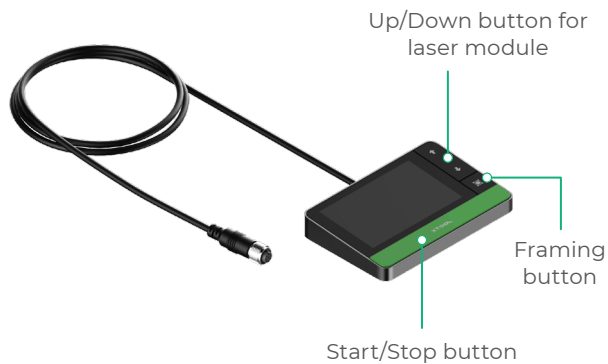
Model MXF-K002-001:



Model MXF-K002-B20:



Touchscreen controller



- **Up/Down button for laser module:** Lifts or lowers the laser module during manual focusing.
- **Framing button:** Starts or stops framing.
- **Start/Stop button:** Starts or stops material processing.



For the MXF-K002-B20 model, the plug of the touchscreen controller is slightly different.

Nameplate



Class 1:

XTOOL | F1 Ultra

Model: MXF-K002-001 **Wavelength:** 445 ± 15 nm (20 W) / 1064 ± 5 nm (20 W)
Input power: 24 V – 25 V ≈ 10 A **FCC ID:** 2AH9Q-MXFK003
Manufactured by: Makeblock Co., Ltd. **IC:** 22796-MXFK003
Company address: Floor 4, Building C3, Nanshan iPark, No.1001 Xueyuan Avenue, Nanshan District, Shenzhen, Guangdong Province, 518000, China
EU Contact: Makeblock Europe B.V.
Address: Westplein 12, 3016 BM, Rotterdam, the Netherlands **Made in China**
Email: support@info.xtool.com **CAN ICES-003(B)/NMB-003(B)**

This device complies with Part 15 of the FCC Rules. Operation is subject to the following two conditions: (1) this device may not cause harmful interference, and (2) this device must accept any interference received, including interference that may cause undesired operation.

Complies with 21 CFR 1040.10 and 1040.11 except for conformance with IEC 60825-1 Ed. 3, as described in Laser Notice No. 56, dated May 8, 2019.



Class 4:

XTOOL | F1 Ultra

Model: MXF-K002-B20 **Wavelength:** 445 ± 15 nm (20 W) / 1064 ± 5 nm (20 W)
Input power: 24 V – 25 V ≈ 8 A **FCC ID:** 2AH9Q-MXFK002
Manufactured by: Makeblock Co., Ltd. **IC:** 22796-MXFK002
Company address: Floor 4, Building C3, Nanshan iPark, No.1001 Xueyuan Avenue, Nanshan District, Shenzhen, Guangdong Province, 518000, China
Email: support@info.xtool.com **Made in China**
CAN ICES-003(B)/NMB-003(B)

This device complies with Part 15 of the FCC Rules. Operation is subject to the following two conditions: (1) this device may not cause harmful interference, and (2) this device must accept any interference received, including interference that may cause undesired operation.

Complies with 21 CFR 1040.10 and 1040.11 except for conformance with IEC 60825-1 Ed. 3, as described in Laser Notice No. 56, dated May 8, 2019.



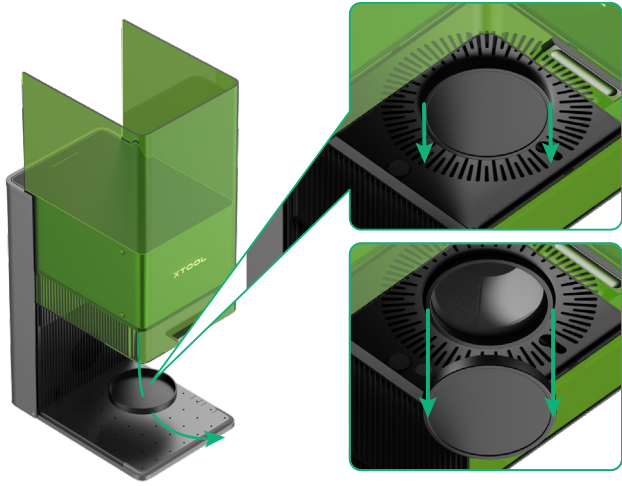
Specifications

Product name	xTool F1 Ultra
Size	493 mm × 253 mm × 373 mm
Internal working area	220 mm × 220 mm
Maximum processing speed	10,000 mm/s

Input power	24 V – 25 V ≈ max. 10 A
Laser module	445 ± 15 nm blue-light laser 1064 ± 5 nm fiber infrared laser
Laser power	20 W (445 ± 15 nm) 20 W (1064 ± 5 nm)
Connection mode	Wi-Fi, USB, IP

Get the machine ready

- 1 Pull down the field lens protector to remove it.



If you won't use the machine for a long period of time, you can install the protector back to prevent the field lens from getting dusty. Ensure that the protector is removed every time before you use the machine.

- 2 Insert the key.



Access-control key

You can remove the key to disable the processing and related functions of the machine.

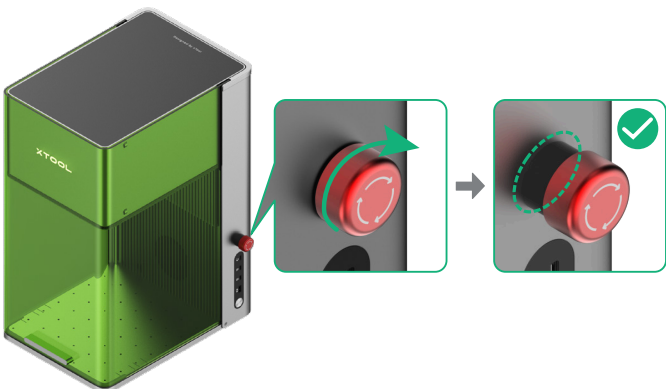
Interlock connector (For Class 4 model)

You can also use the key as an interlock connector. Go to support.xtool.com/article/1367 to learn more.



support.xtool.com/article/1367

- 3 Ensure that the emergency stop button is released. If it is pressed, rotate to release it.

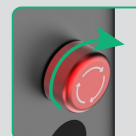


Emergency stop button

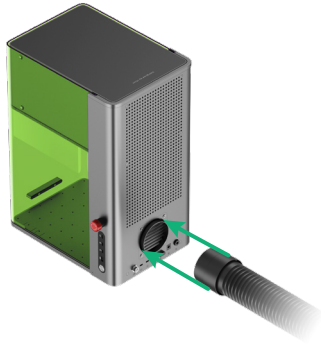
If an emergency occurs, you can press the emergency stop button to shut off the machine.



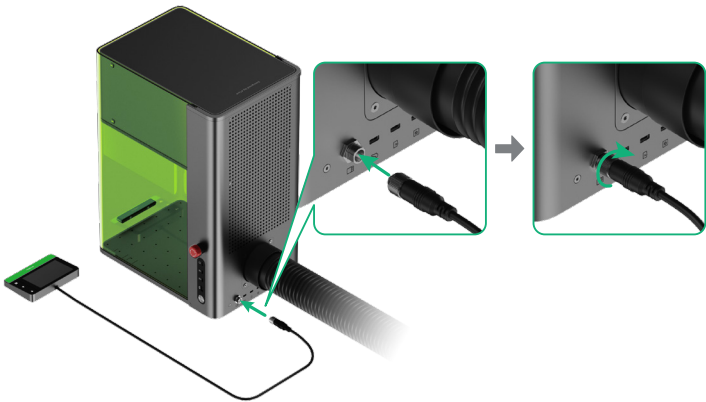
After dealing with the emergency, you can turn the emergency stop button to reset it.




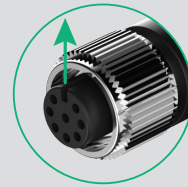
4 Install the pipe.



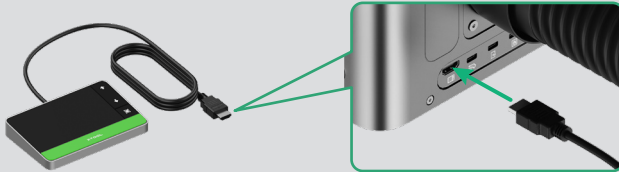
5 Connect the touchscreen controller.



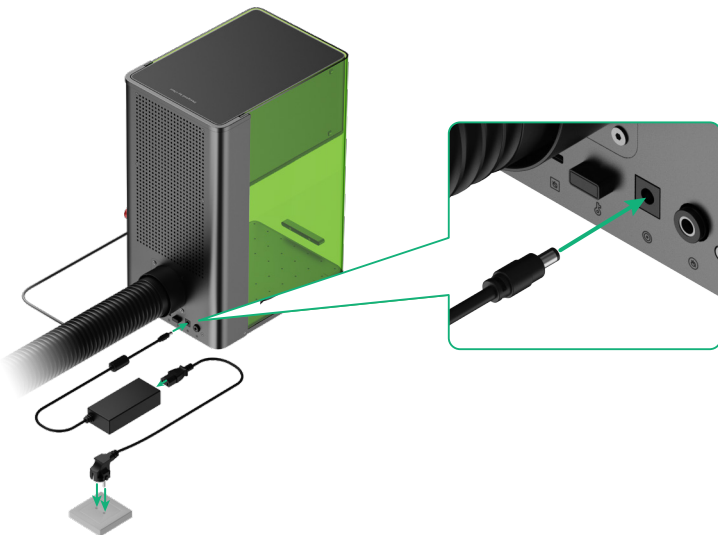
 To insert the connector, ensure that the notch at the end faces up.



If your product model is MXF-K002-B20, insert the plug directly into the touchscreen controller port.



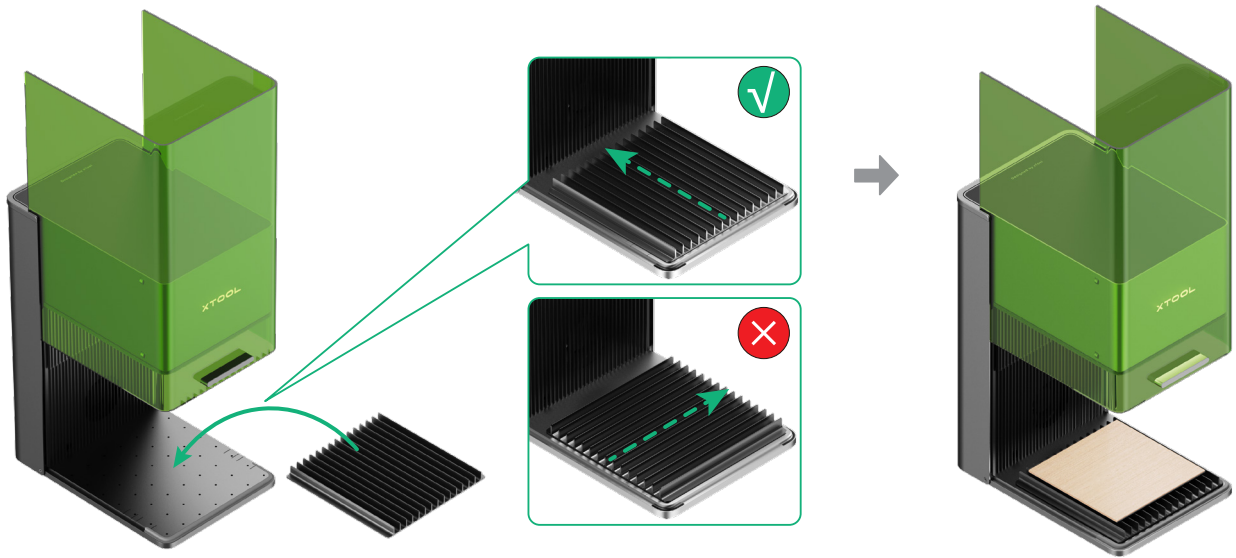
6 Connect to a power supply.



Install accessories

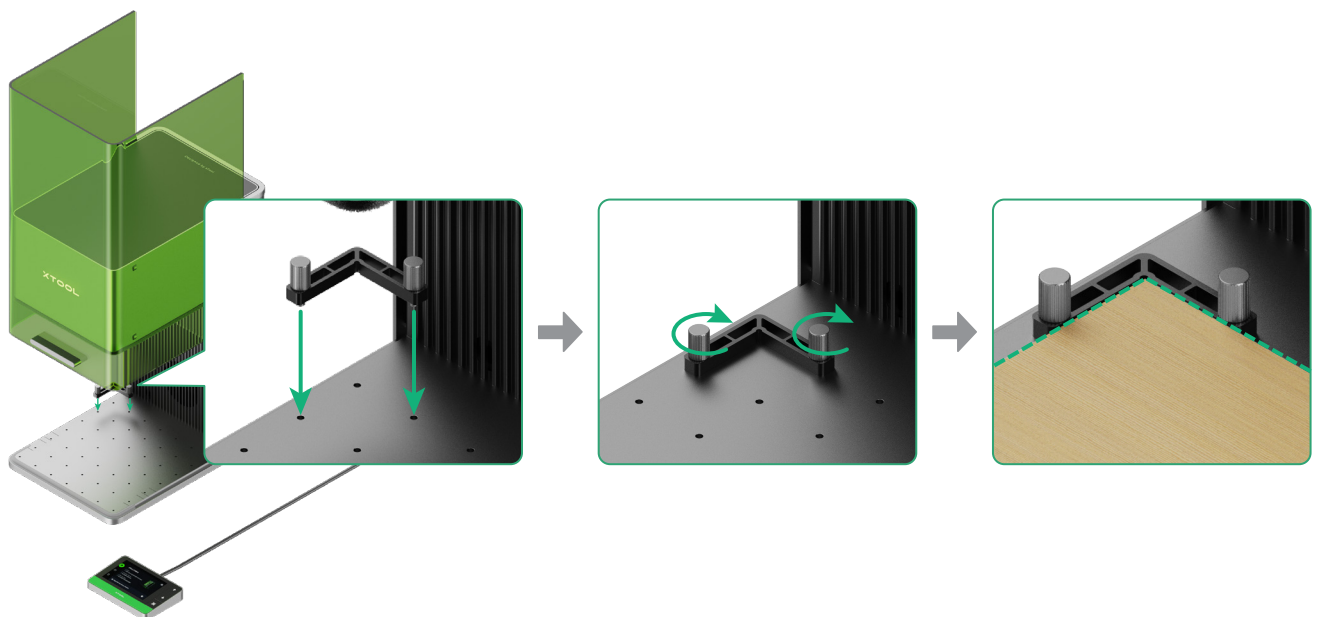
Use the slatted panel

To cut a material, you are advised to use the slatted panel. It can reduce the areas burned during material processing and protect the baseplate.



Use the L-shaped positioning piece

During batch processing, the L-shaped positioning piece can help you place a material in the same position every time.



Use your xTool F1 Ultra

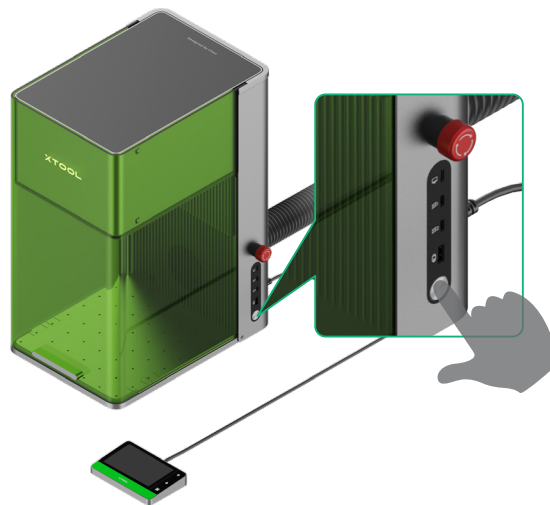
Power on

Press the power switch to turn on xTool F1 Ultra.



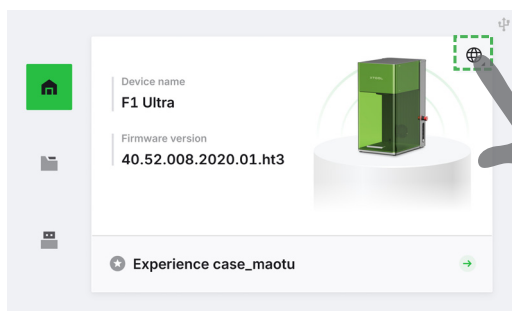
Do not use the emergency stop button as a power switch.

Use the emergency stop button only when an emergency occurs. Using it as a power switch to turn on and off the machine may damage the machine.



Set up the language

Set the UI language of the touchscreen controller.

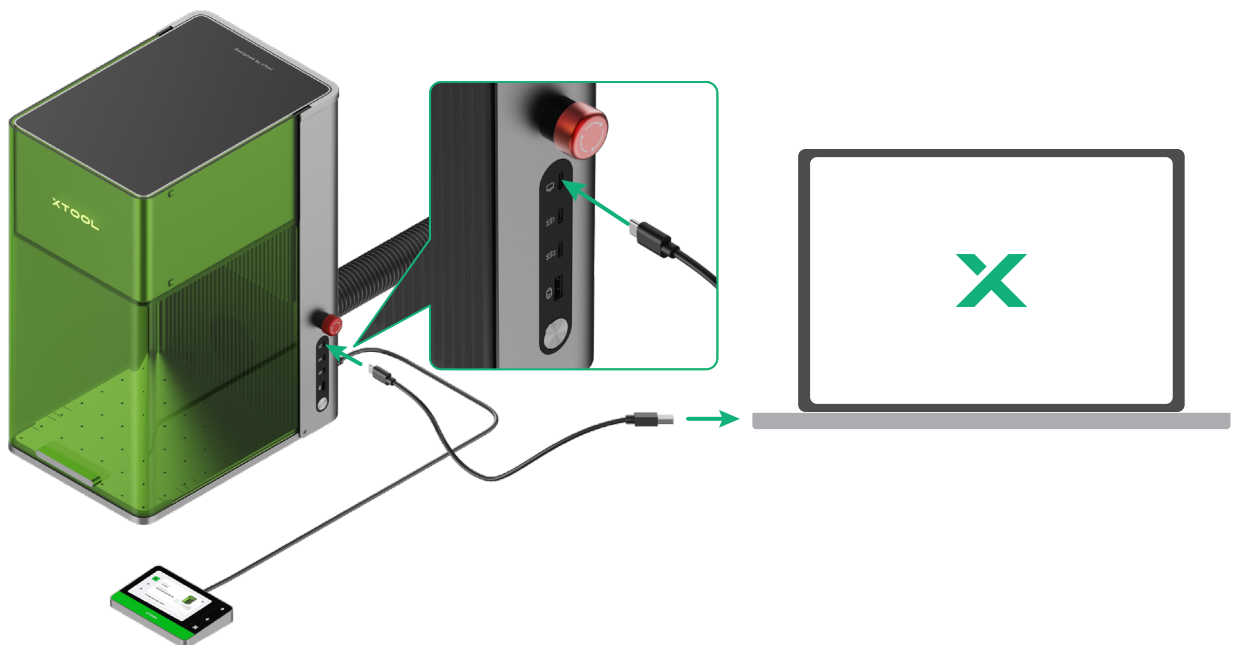


Use software to operate xTool F1 Ultra

(1) Visit s.xtool.com/software to download and install xTool software.



(2) Use the USB cable to connect xTool F1 Ultra to the computer, and then connect xTool F1 Ultra in the software.






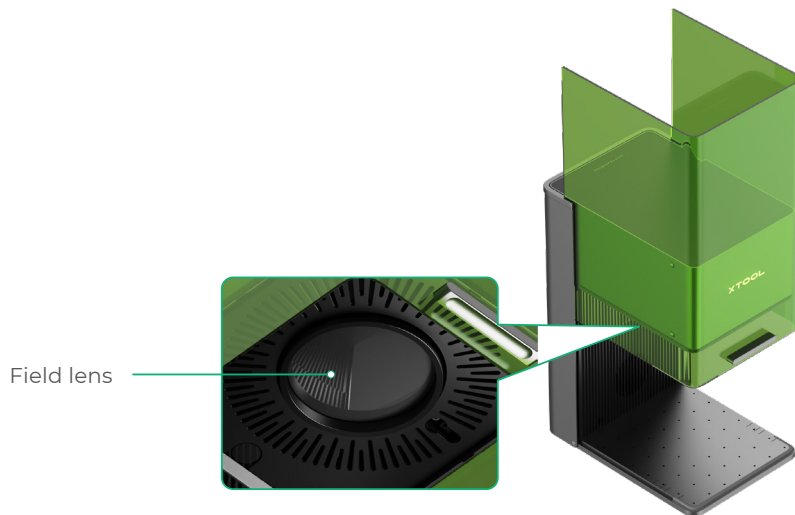
For details about how to use xTool software to operate xTool F1 Ultra to process materials, scan the QR code or visit support.xtool.com/product/33.



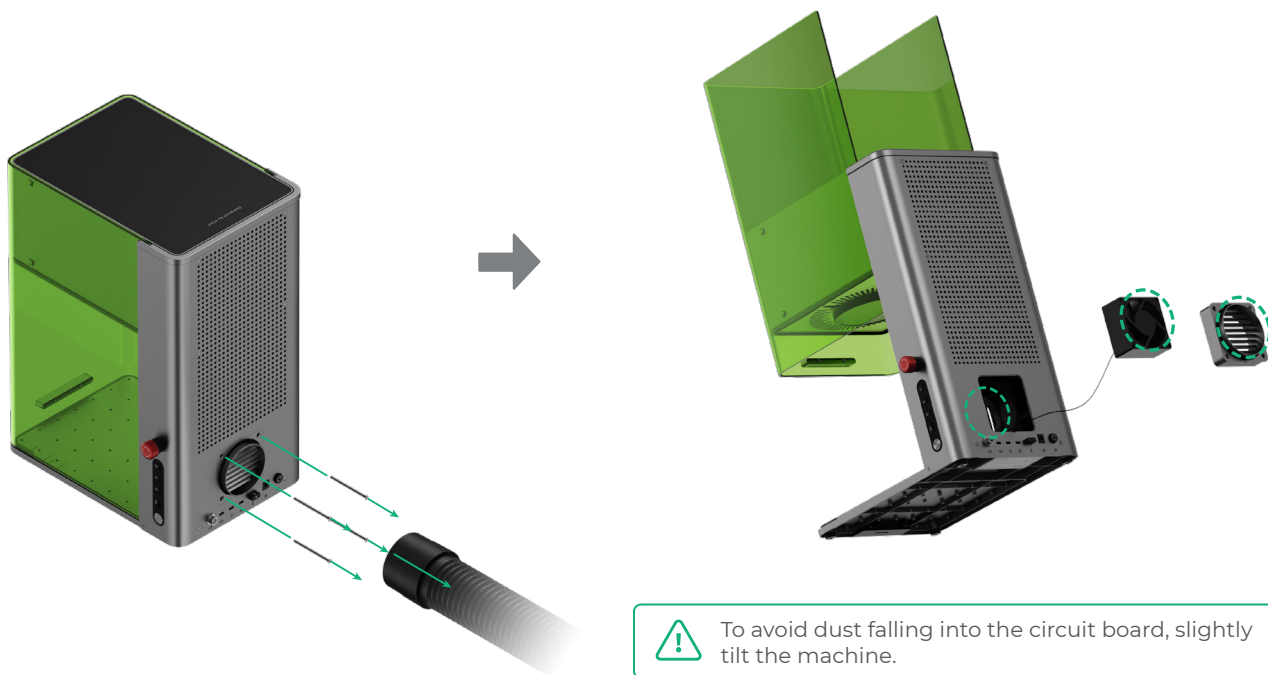
Maintenance


 Disconnect power before maintaining the product.

■ If laser power attenuation occurs, for example, engraved patterns are shallow or materials can't be cut as expected, the field lens may get dirty. Clean it with the lint-free cloth moistened with alcohol.



■ If smoke runs out of the protective enclosure, the fan and smoke outlet may be blocked due to dust. Clean them to ensure proper smoke exhausting.



 To avoid dust falling into the circuit board, slightly tilt the machine.

XTOOL