

XTOOL | F2 Ultra

Quick Start Guide



List of items - - - - - **01**

Meet xTool F2 Ultra - - - - - **02**

Install xTool F2 Ultra - - - - - **05**

Use xTool F2 Ultra - - - - - **08**

Use accessories - - - - - **10**

Maintenance - - - - - **11**

* The English version is the original instructions verified by the manufacturer.

List of items



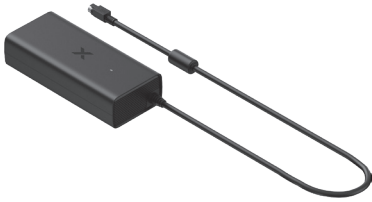
xTool F2 Ultra



Touchscreen controller



Pipe



Power adapter



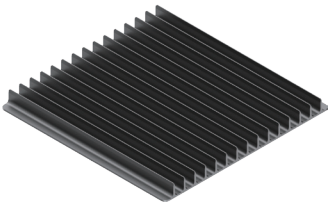
Power cable



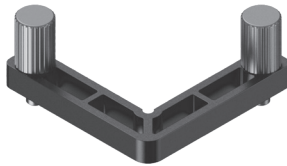
USB cable



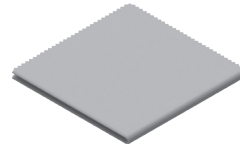
Key



Slatted panel



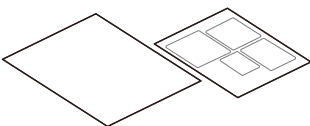
L-shaped positioning piece



Lint-free cloth



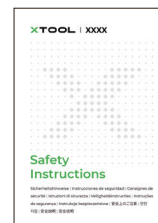
Screwdriver



Sample materials



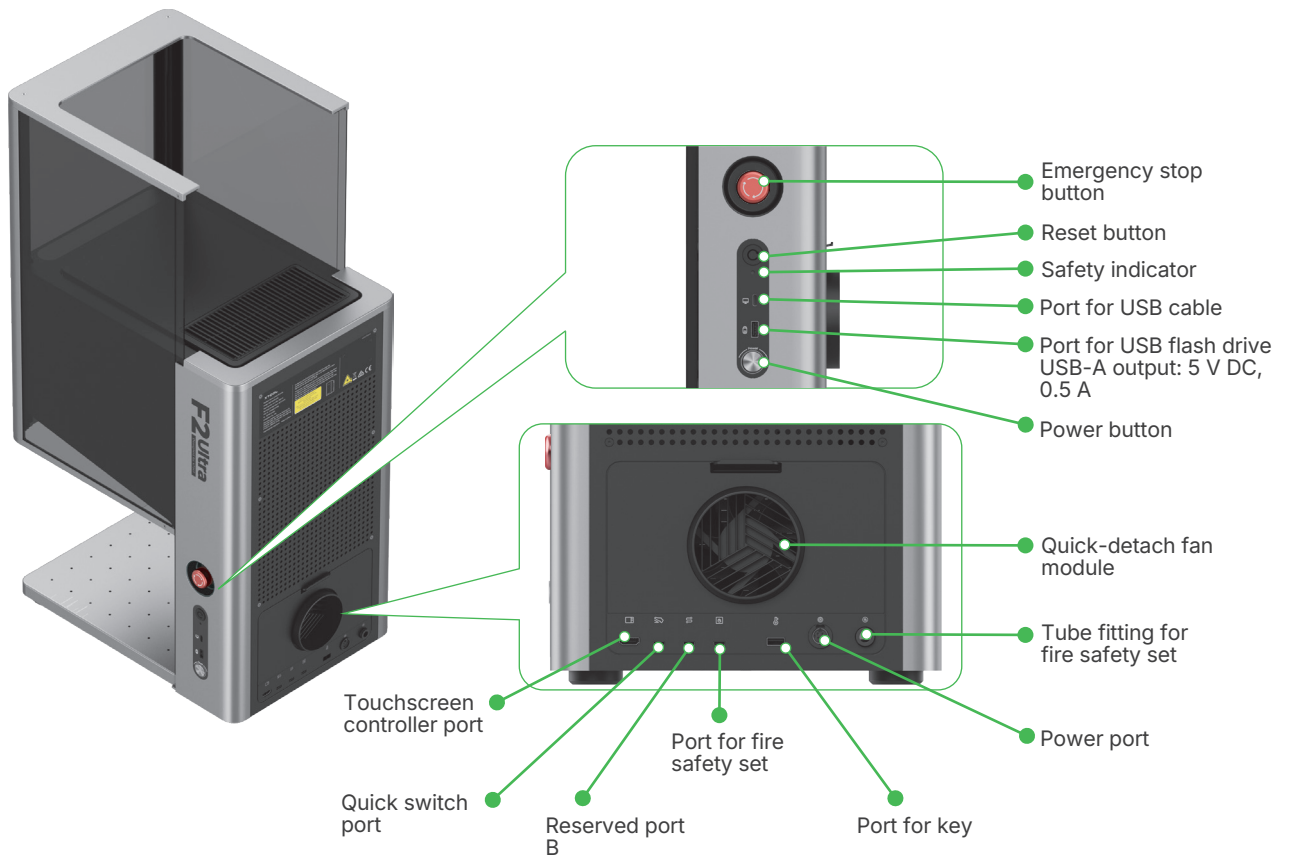
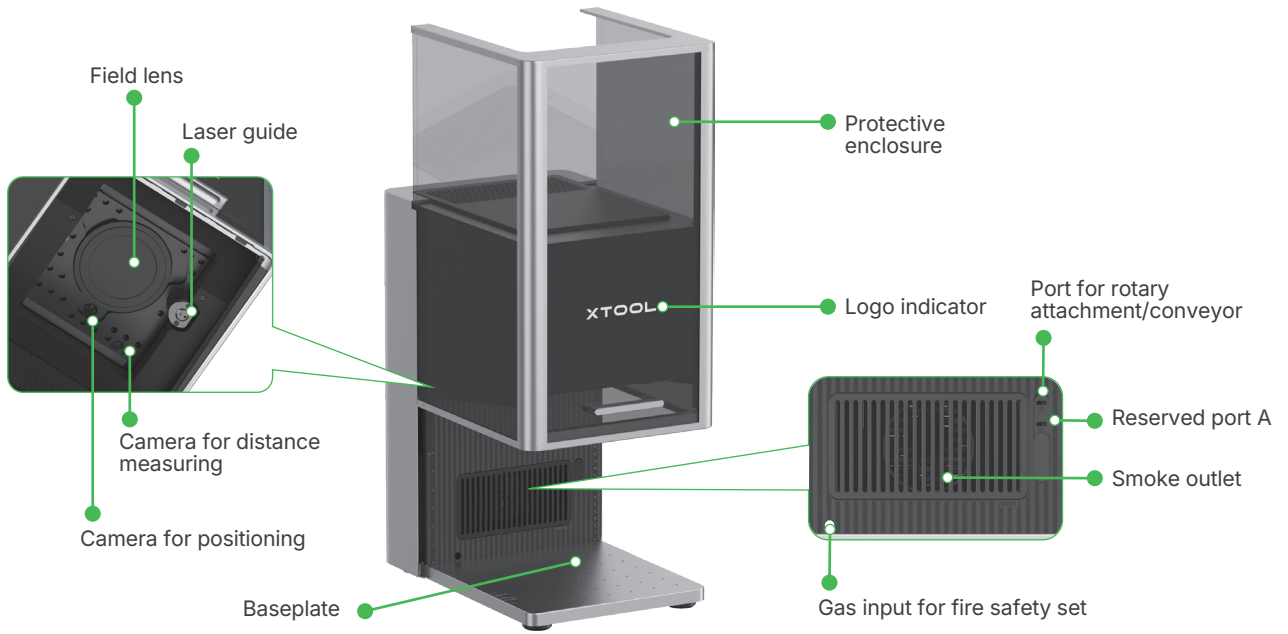
Quick Start Guide




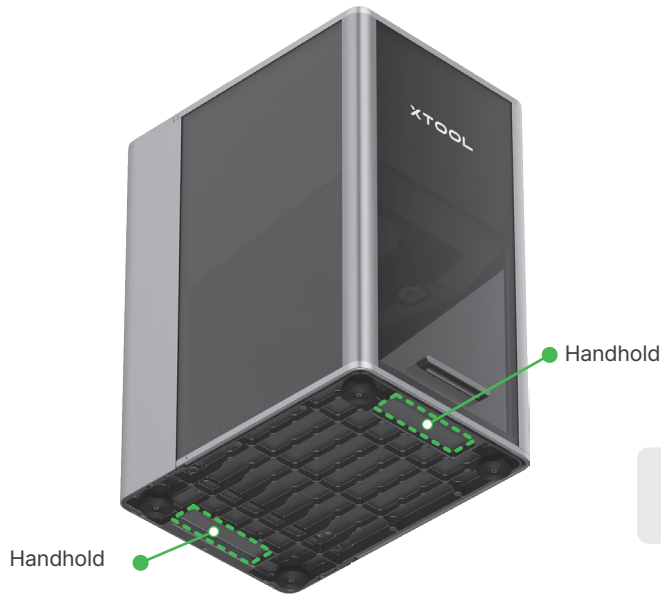
Safety Instructions

Meet xTool F2 Ultra

Product structure

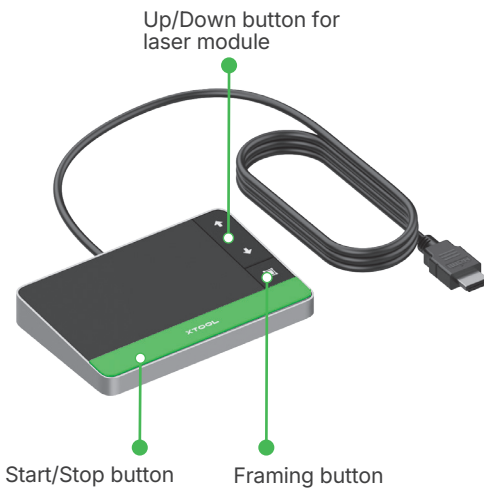


 Reserved port A and port B function differently and can not be used interchangeably.



By gripping on the handholds, you can easily move the machine.

Touchscreen controller



- **Up/Down button for laser module:** Lifts or lowers the laser module during manual focusing.
- **Framing button:** Press it once to start or stop framing.
- **Start/Stop button:** Press it once to start or stop material processing; press it twice consecutively to repeat the last processing task.




Indicator description



Logo indicator:

Device state	Indicator display	
Powered on	XTOOL	Solid on
Processing	-XTOOL-	Blinking slowly
Setting network / Upgrading firmware	-XTOOL-	Blinking rapidly
Sleeping / Powered off	XTOOL	Going off

Safety indicator:

Safety indicator	Device state
 Solid red	Emergency stop button pressed, and device in an emergency stop state
 Solid white	Emergency stop released, and device reset required
 Solid green	Emergency stop released, and device ready for operation

Specifications

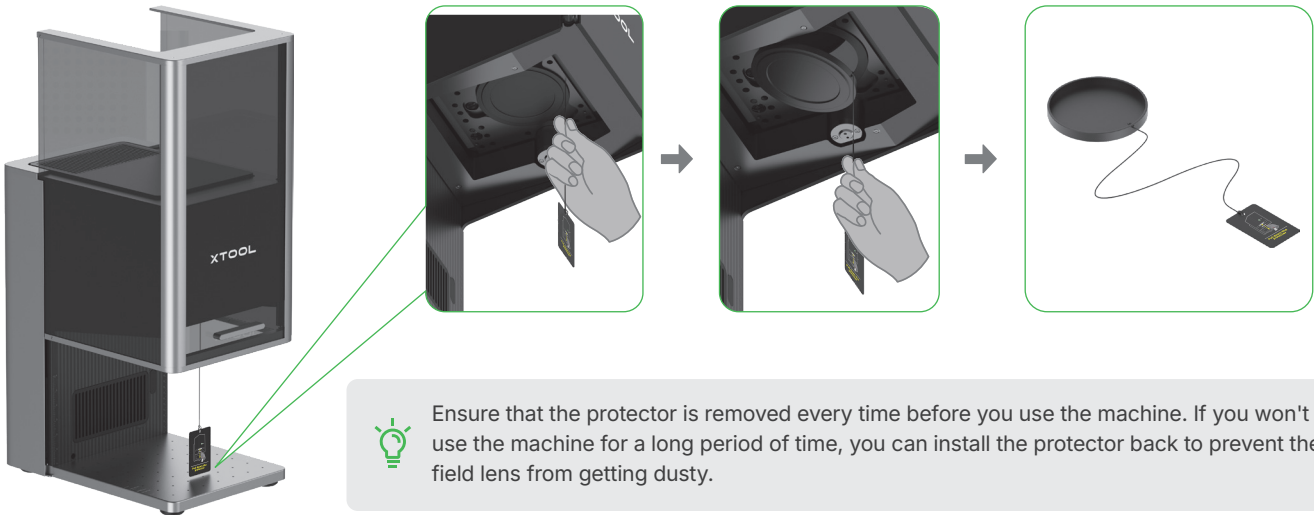
Product name	xTool F2 Ultra	Working laser	40 W blue-light diode laser 60 W infrared MOPA laser
Size (W x D x H)	294 mm x 429 mm x 520 mm	Working laser wavelength	Blue-light laser: 445 ± 15 nm Infrared laser: 1064 ± 5 nm
Voltage	110 V / 220 V	Internal working area	220 mm x 220 mm
Connection mode	Wi-Fi, USB, IP	Maximum processing speed	15,000 mm/s



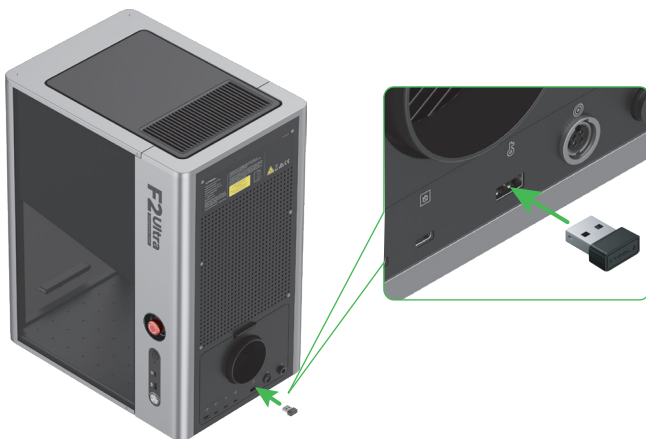
The single-laser xTool F2 Ultra includes only a 60 W infrared MOPA working laser. The 40 W blue-light diode laser is not included in the single-laser model.

Install xTool F2 Ultra

1 Pull the tag string down to detach the field lens protector.



2 Insert the key.



You can use the key either as an access-control key or a remote interlock connector.

Access-control key

Removing the key can disable the machine's processing and related functions.

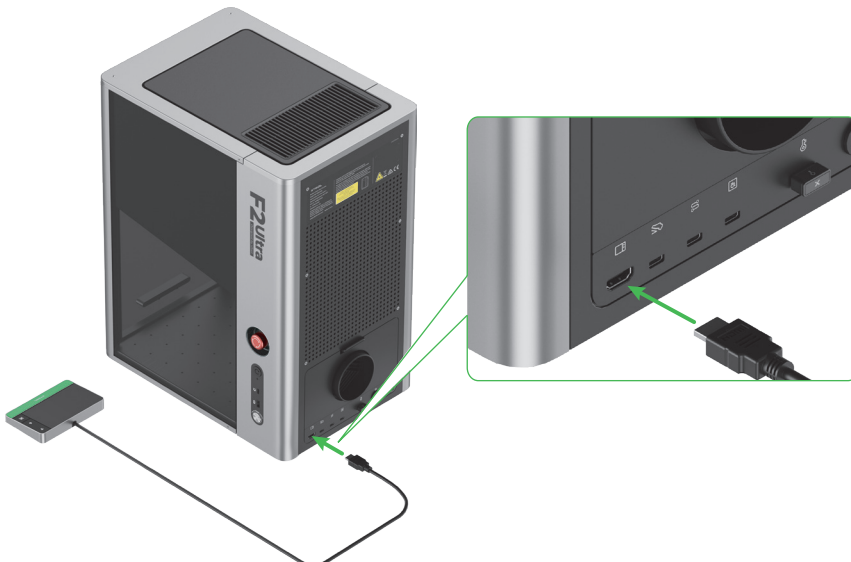
Remote interlock connector

For detailed instructions, scan the QR code or visit the link.

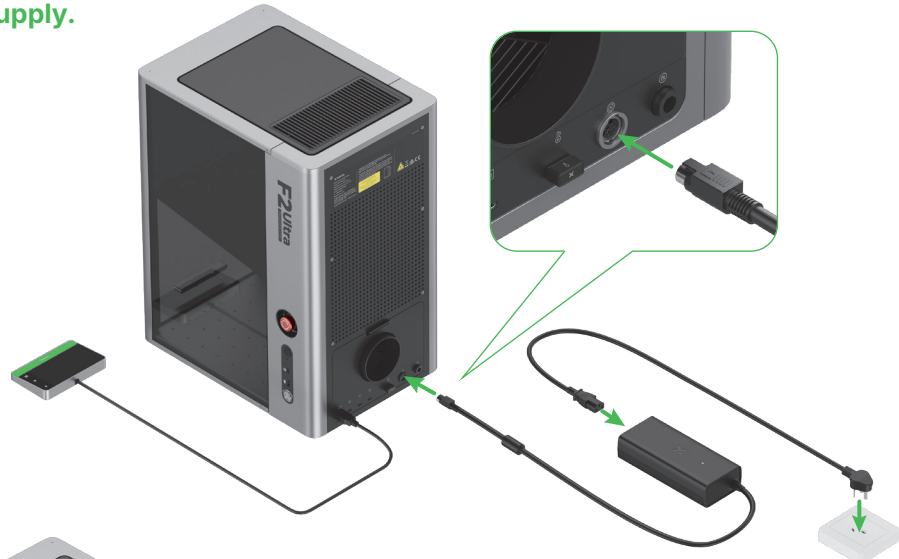


support.xtool.com/article/1367

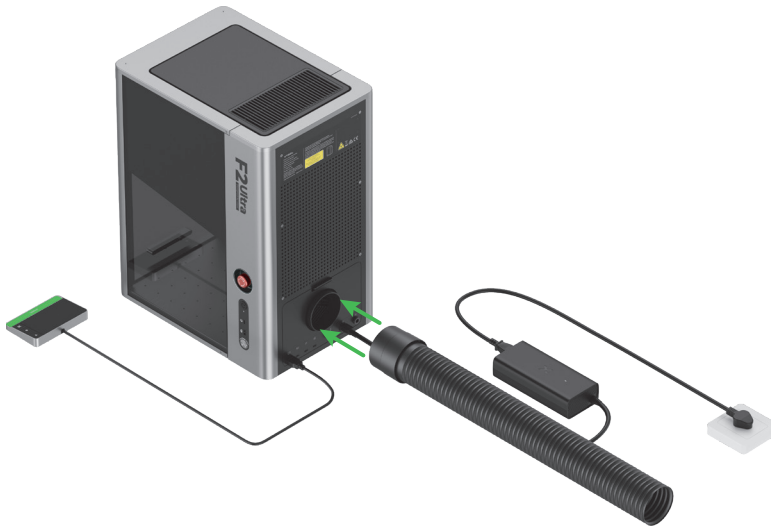
3 Connect the touchscreen controller.



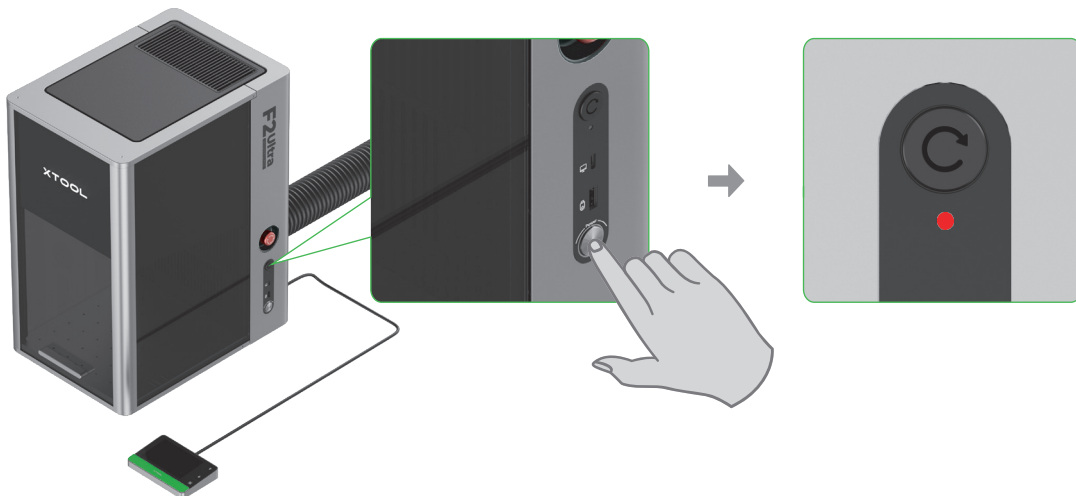
4 Connect to a power supply.



5 Install the pipe.



6 Press the power button to turn on xTool F2 Ultra. The safety indicator will light up red.



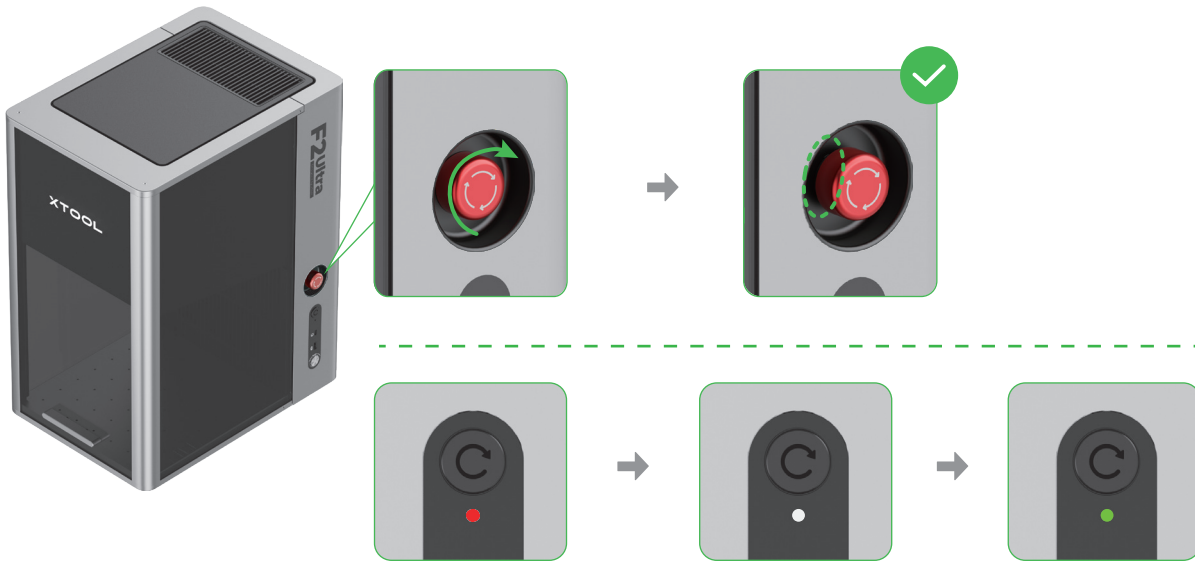
Never use the emergency stop button as a power button.



Use the emergency stop button only when an emergency occurs. Using it as a power button to turn on and off the device may damage it.

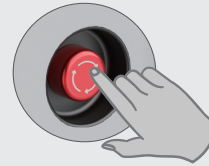


- 7** Rotate the emergency stop button clockwise to release it. The safety indicator will first turn white and then green.



Emergency stop button

If an emergency occurs, press the emergency stop button to shut off the device. After dealing with the emergency, rotate the emergency stop button to release it.



If the safety indicator does not change from white to green automatically, the device is in the safety mode. Scan the QR code or visit the link and follow the instructions to continue.



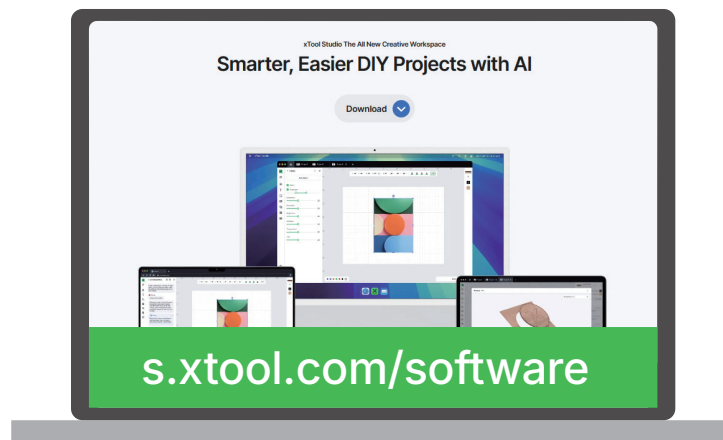
support.xtool.com/article/3173

8 Set the UI language of the touchscreen controller.

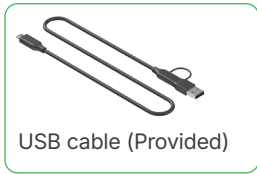



Use your xTool F2 Ultra

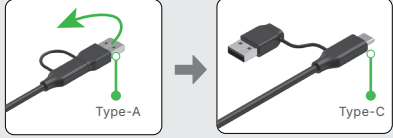
(1) Visit s.xtool.com/software to download and install the software developed by xTool.



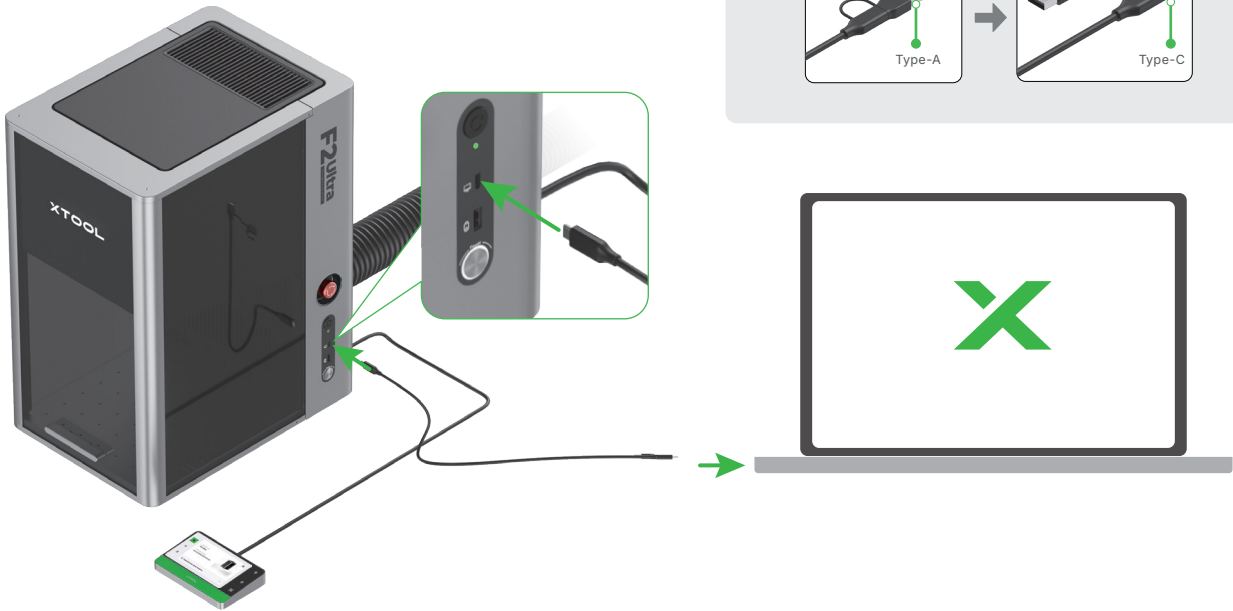
(2) Use the USB cable to connect xTool F2 Ultra to your computer, and then connect xTool F2 Ultra in the software.



 The other end of the USB cable can be connected to a USB Type-A or Type-C port. Choose between the connectors based on your needs.



Type-A Type-C



For details about how to use the software to operate xTool F2 Ultra to process materials, scan the QR code or visit the link.

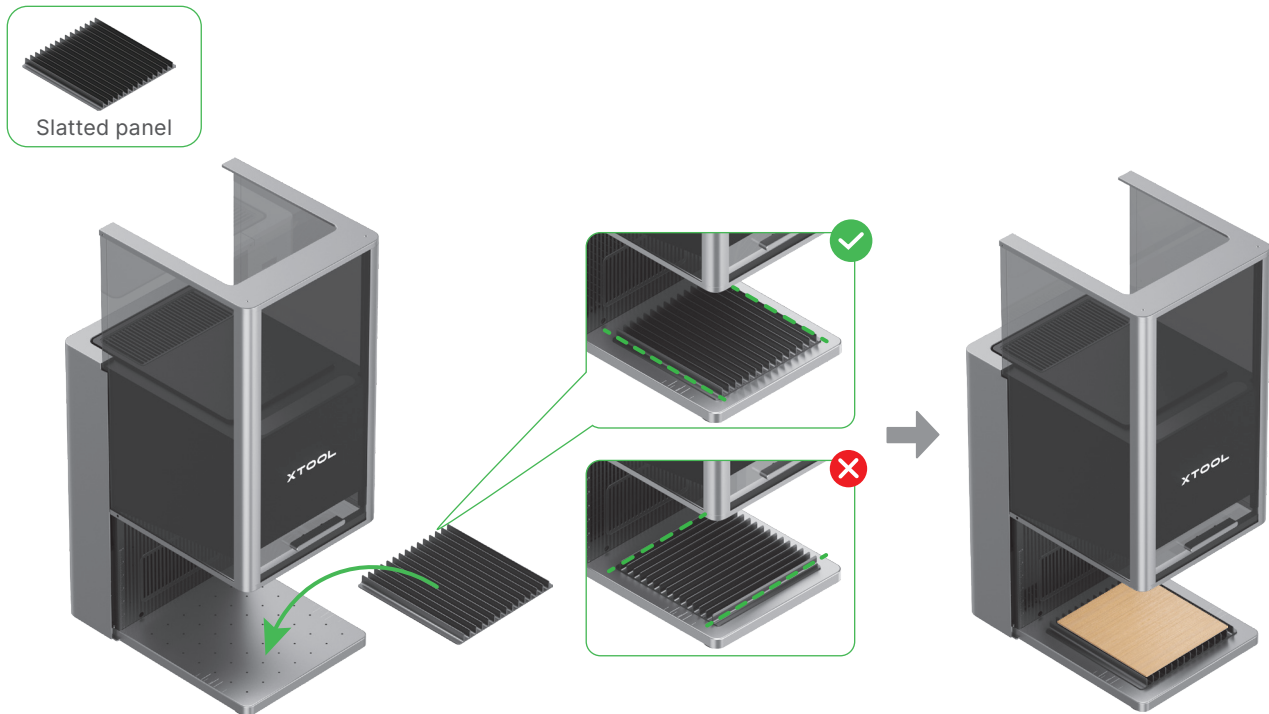


support.xtool.com/product/59

Use accessories

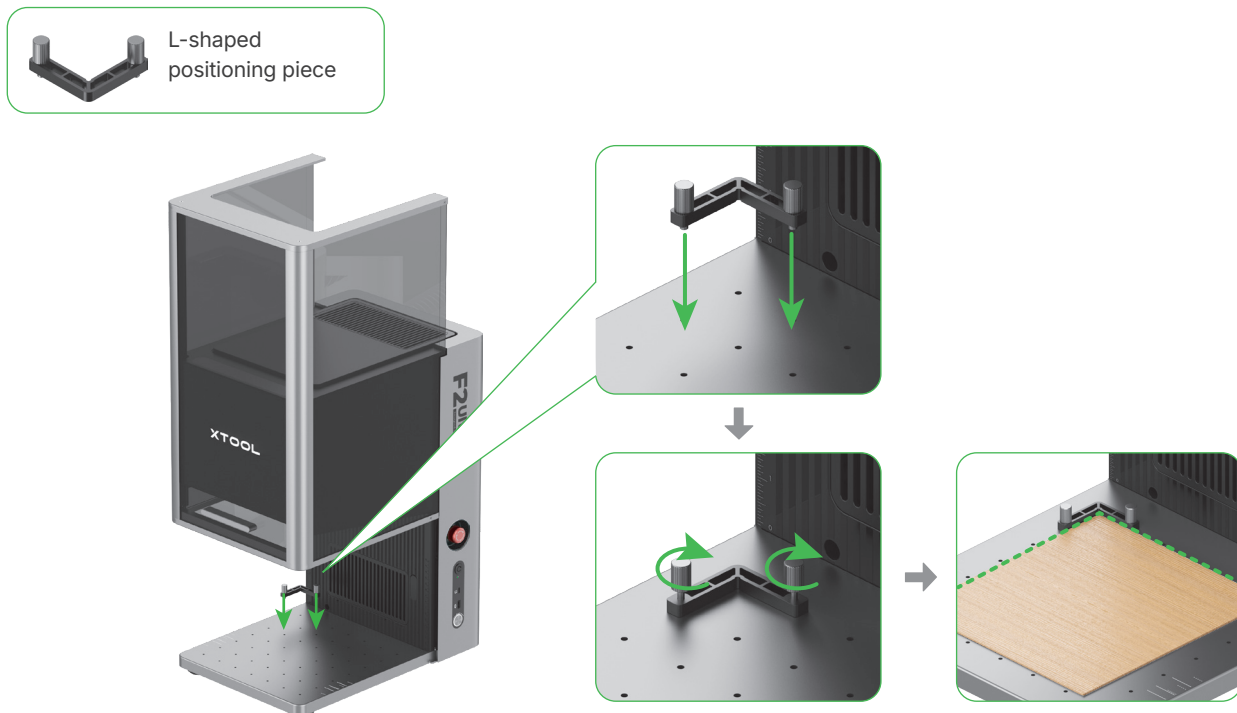
Slatted panel

To cut a material, you are advised to use the slatted panel. It can reduce the areas burned and protect the baseplate during material processing.



L-shaped positioning piece

You can use the L-shaped positioning piece for batch processing. It helps you place materials in the same position for each processing task.



Maintenance



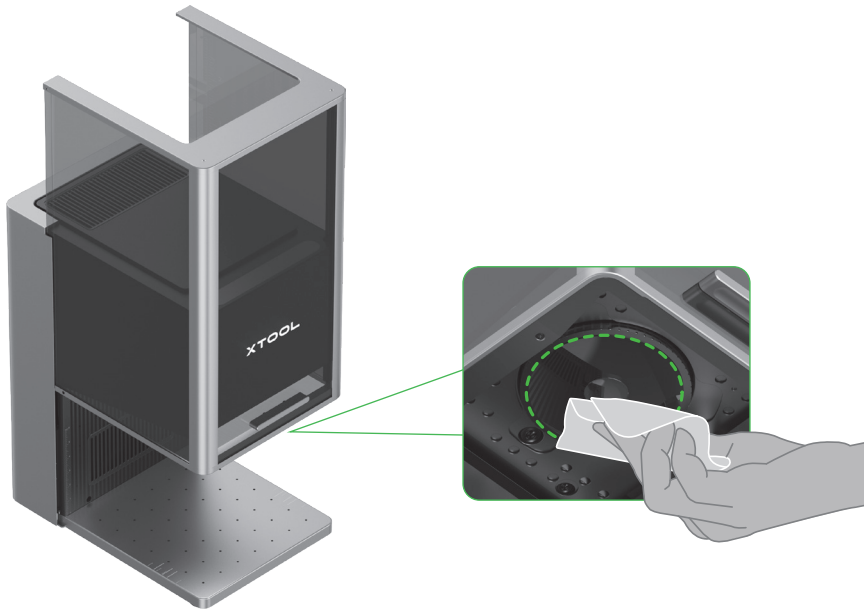
Disconnect power before maintaining the product.

Clean the field lens

When laser power attenuation occurs, for example, engraved patterns are shallow or materials can't be cut as expected, the field lens may get dirty. Clean it with the lint-free cloth moistened with alcohol.



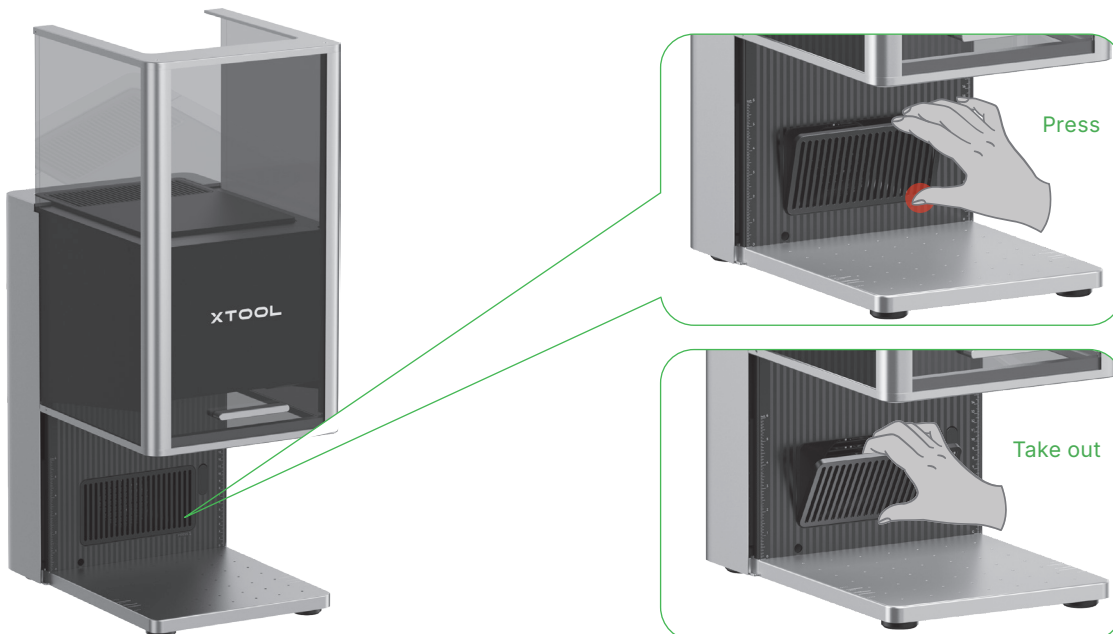
Lint-free cloth



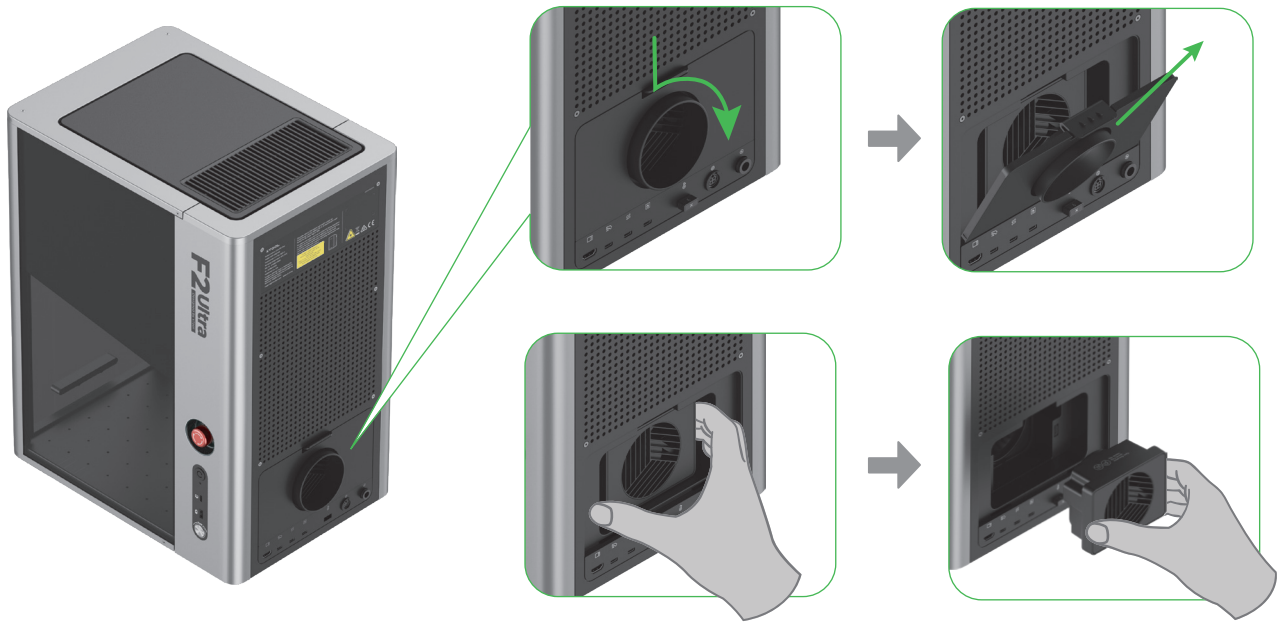
Clean the fan module

When smoke runs out of the protective enclosure, the fan module may be blocked by dust. Clean it to ensure proper smoke exhausting.

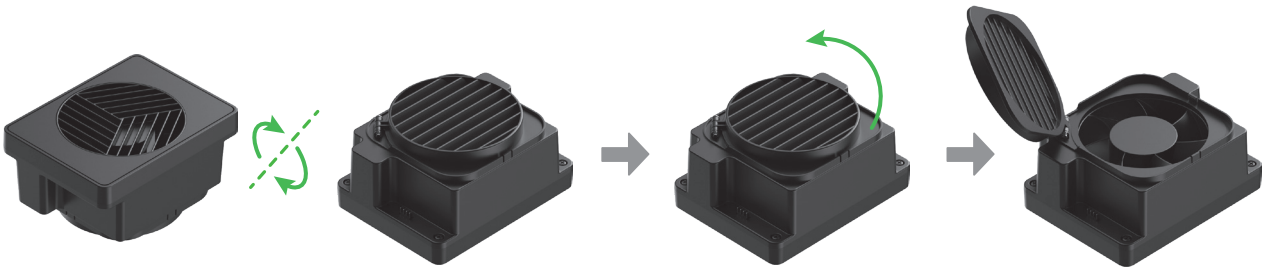
(1) Remove the magnetic fan guard from the smoke outlet.



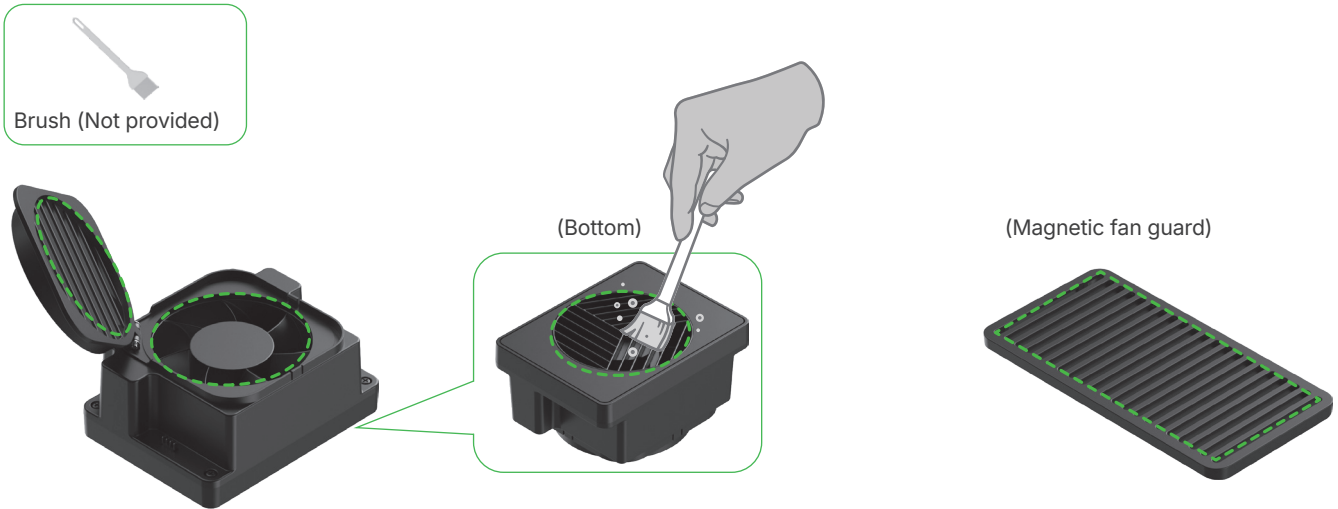
(2) Open the cover, and then take out the fan module.




(3) Open the cover to reveal the fan.



(4) Use a brush or other tools to clean the fan module and the magnetic fan guard. Then, install them back to the main unit.



 Do not rinse or immerse the fan module in water, as it may damage the circuit.

XTOOL